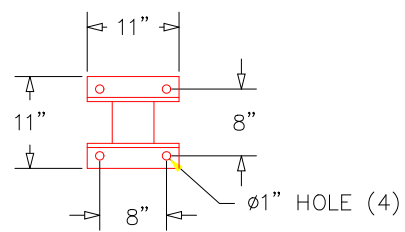
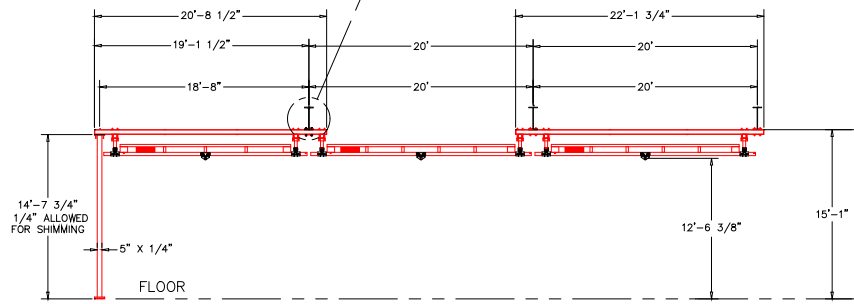
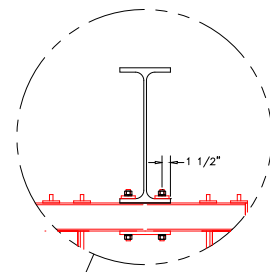


SWAY BRACING IS REQ'D,
REFER TO MANUAL.
HANGER DETAIL SHOWN IS OUR STANDARD
DESIGN AND MAY NOT REPRESENT THE ACTUAL
HANGER DESIGN UTILIZED ON THIS SYSTEM.

NOTE C: MINIMUM THD ROD DROP MUST MAINTAIN
3" OF CLEARANCE BETWEEN BRIDGE
AND LOWEST OBSTRUCTION.

HANGERS ARE ON 30' CENTERS MAXIMUM
WITH A 48" CANTILEVER ON EACH END MAXIMUM.
HANGERS MUST BE WITHIN 48" OF SPLICE JOINT
⊗ = HANGER POINT
DO NOT SCALE FROM DRAWING.
DIMENSIONS ARE STEEL TO STEEL AND MAY VARY.
HANGER POSITION TOLERANCE = ±3 1/2"

HANGER LOAD = 7615#



BASE BOLT PATTERN

SHIMS AND HEADER TO I-BEAM HARDWARE
TO BE PROVIDED BY ENGINEERED LIFTING SYSTEMS

CRANE INFORMATION	
CAPACITY: 2000LBS/BR	
BRIDGE OAL: 18'-1 1/2"	
BRIDGE SERIES: 2000	
RUNWAY OAL: 39'-3 1/2"	
RUNWAY SERIES: 2000	
TOLERANCE: ±1/8	BY: BARDEL
QUANTITY: 1	CO: A28921

GORBEL 600 FISHERS RUN P.O. BOX 593 FISHERS, NY 14453-0593	
GENERAL ARRANGEMENT	
DATE: AUG 22, 2005	P/N: A28921.A