

JDN AIR HOISTS MINI

THE JDN "ECONOMY LINE". A HANDFUL OF POWER.



Lifting capacities
125 kg
250 kg
500 kg
980 kg



Classification according to EC Directive
on Hazardous Locations 94/9/EEC



J.D. NEUHAUS
powered by air!

THE MINI, A PROVEN PRINCIPLE INTERPRETED UP TO DATE.

Already for decades J.D. Neuhaus has been manufacturing hoists with the driving medium compressed air and is today's worldwide market leader with this development. With a trend setting innovation JDN has given this technique a new format named mini as "Economy Line".

The JDN "Economy Line" mini completes our PROFI series proven in industrial heavy duty applications. The mini with its renowned JDN quality widens the range of application of air hoists also in the "light duty" sector in an optimum way.

The JDN air hoist mini with its patented motor-brake-system and robust aluminium housing consists of only a few components resulting in little and easy maintenance. Due to its small headroom and light weight the mini is easy to handle and to move.

SMALL IN SIZE. BIG IN PERFORMANCE.

JDN air hoists of the mini-series are masters in the trade of compact and light chain hoists and only weigh between 9.5 kg and 23 kg depending on capacity. The JDN "Economy Line" mini is available in two types with carrying capacities of 125 kg, 250 kg, as well as 500 kg and 980 kg and lifts with a single chain fall up to a lifting height of 8 m. As standard they are equipped with a direct lever control and

an emergency shut-off valve. The direct control facilitates a sensitive and infinitely variable and precise positioning of the load. The highest and lowest hook position is limited by buffers (forced stop).

The newly developed load hooks are designed in such a way to also allow broader and thicker harnesses i.e. nylon straps to be fixed. The low wear and galvanised load chain is ideally suited for permanent and longtime applications. The precision chain guide increases the service life.

A chain box excludes impediments of the working process as the unloaded chain fall cannot hang down.

The driving energy pneumatic air is simply connected by a hose socket with cap nut or by a quick coupling (available as accessory).

The new motor generation with integrated braking function, with a minimum of parts and reduced dimensions is designed for endurance run, frequent switching and extended work cycles.



MINI 125
MINI 250



MINI 500
MINI 1000



THE ADVANTAGES AT A GLANCE:

- > Extremely compact at a minimum of weight
- > High flexibility for varying working places
- > Few components for easiest operation and maintenance
- > Ideal as an inexpensive alternative also compared to hoists with other driving media
- > Suitable for lube free operation, no additional oiler required
- > Suitable for application in hazardous areas
- > Insensitive to dust, humidity and temperatures from - 20°C up to approx. +50°C
- > Also suitable for horizontal pulling
- > Newly developed braking system with little wear
- > Twist-free suspension hook to suspend the hoist
- > Extremely sensitive lever control with emergency shut-off valve: max. control length 6m
- > Available for lifting heights of up to 8m, chain box as standard
- > As an option also to be delivered with a manual trolley

For especially difficult applications and working conditions JDN still recommends the robust hoists of the PROFI series.

ni
25



THE MINI, A HOIST WITH MANY POSSIBILITIES.

The motor of the mini 125 and mini 250 has an output of 0.4 kW allowing maximum lifting speeds at nominal loads of 15 m/min resp. 8 m/min.

The motor of the mini 500 and mini 1000 has an output of 1 kW allowing lifting speeds at nominal loads of 10 m/min resp. 5 m/min.

MULTI-TALENT WITH FUTURE.

A lot of good qualities and functions distinguish the JDN air hoists of the mini-series enabling you to find solutions for material handling problems where loads have to be moved.

The applications for the mini are almost unlimited. Either in the chemical industry or in the car workshop, whether stationary or always at different sites, they show their strength everywhere.

The mini can be deployed in hazardous areas as the driving medium compressed air does not produce any sparks.

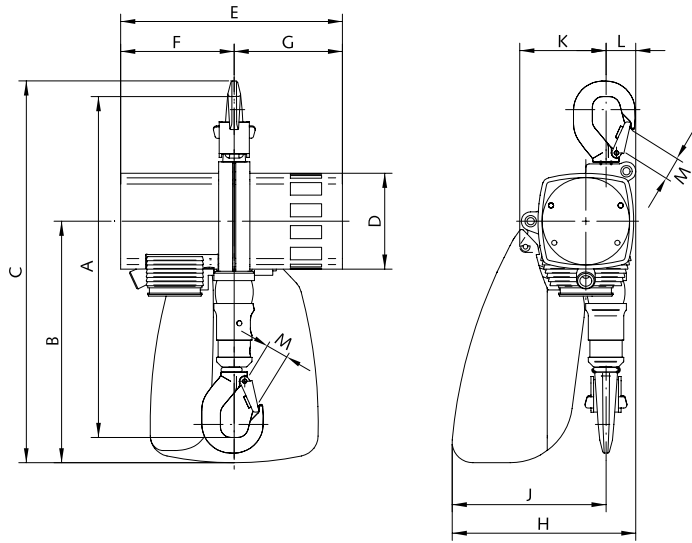
For moving loads a manual trolley is available into which the mini is suspended.

Under which aspect you look at the JDN mini: it would be difficult for you to find a more technically advanced, flexible and compact hoist which works for you in such a versatile and cost-effective way.



THE LITTLE ONE WHICH NEVER GETS OUT OF BREATH.

TECHNICAL DATA FOR JDN AIR HOISTS MINI



Type	mini 125	mini 250	mini 500	mini 1000	
Lifting capacity	kg	125	250	500	980
Number of chain falls		1	1	1	1
Motor output	kW	0.4	0.4	1.0	1.0
Air pressure	bar	6	6	6	6
Lifting speed at full load*	m/min	15	8	10	5
Lifting speed without load*	m/min	40	20	20	10
Lowering speed at full load	m/min	30	16	18	10
Lowering speed without load	m/min	24	12	12	6
Air consumption at full load - Lifting	m ³ /min	0.5	0.5	1.2	1.2
Air consumption at full load - Lowering	m ³ /min	0.7	0.7	1.6	1.6
Air connection		G ³ / ₈	G ³ / ₈	G ¹ / ₂	G ¹ / ₂
Hose dimension (Ø inside)	mm	9	9	13	13
Weight at standard lift (3m) and 2m length of control	kg	9.5	10.5	21	23
Chain dimension	mm	4 x 12	4 x 12	7 x 21	7 x 21
Weight of 1m chain	kg	0.35	0.35	1.0	1.0
Heights of lift	m	3/5/8			
Lengths of control	m	2/4/6			
Group of mechanisms		1 Bm			
Dimensions in mm		mini 125	mini 250	mini 500	mini 1000
A		328	328	458	458
B		232	232	316	316
C		367	367	505	505
D		92	92	122	122
E		213	213	292	292
F		109	109	148	148
G		104	104	144	144
H		177	177	234	234
J		148	148	194	194
K		83	83	119	119
L		29	29	40	40
M		19	19	28	28

* Lifting speeds at 2 m length of control. Longer control hoses decrease the lifting speeds.

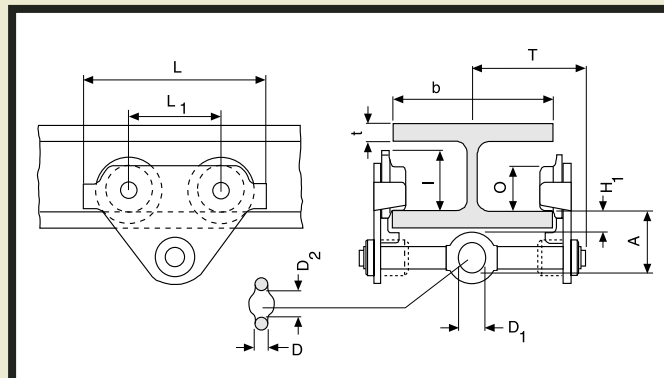


J.D. NEUHAUS
powered by air!

MANUAL TROLLEYS FOR JDN AIR HOISTS MINI.



- > Lifting capacities 500 kg and 1000 kg.
- > Precise adjustment with the right and left hand threaded clevis load bar.
- > Easily adjustable to fit a wide range of beam widths.
- > Adjustable to suit a wide range of beam profiles, e.g. INP, IPE and IPB.
- > The trolley wheels are designed for a max. beam profile incline of 14% according to DIN 1025, Part 1.
- > Excellent rolling features due to machined steel wheels mounted on prelubricated, encapsulated ball bearings.
- > Anti-tilt and anti-drop devices as standard.
- > Centred positioning of the hoist in the clevis, no creeping to left or right.



Type		LN 500	LN 1000
Lifting capacity	kg	500	1000
Beam flange width b	mm	50-220	58-220
max. flange thickness t	mm	34	30
min. curve radius	m	0.9	1.0
Weight	kg	7.7	10.5
Dimensions in mm			
A		79.5	79
D		17	17
D ₁		25	30
D ₂		30	35
H ₁		34	30
I		67.5	81.5
L		260	260
L ₁		130	130
O		55	68
T		144	151

**THE FULL POWER OF COMPRESSED AIR IN
THE SMALLEST OF SPACES. THE MINI.**

mini 125® and *mini 1000*® are registered trademarks of our company.

W 323 GB • Issue: February 2005 • Alterations reserved • With the issue of this edition
all previous versions are null and void • 220052

J.D. Neuhaus GmbH & Co. KG_ 58449 Witten-Heven_ Germany
Phone: +49(0)2302-208-0 _ Fax: +49(0)2302-208-286
web site: www.jdn.de _ e-mail: info@jdn.de



J. D. NEUHAUS
powered by air !